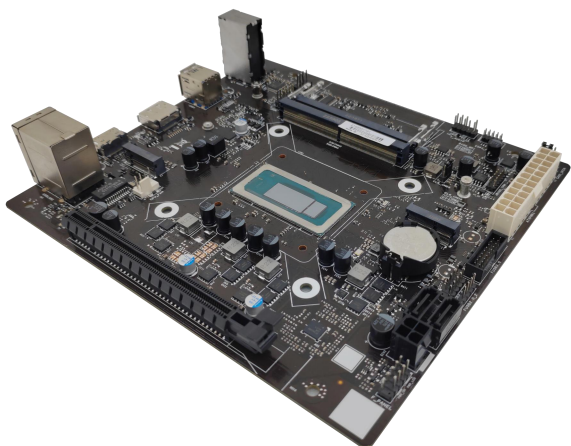


JRPHIX01

Intel Raptor Lake-H 2DIMMS Desktop Motherboard

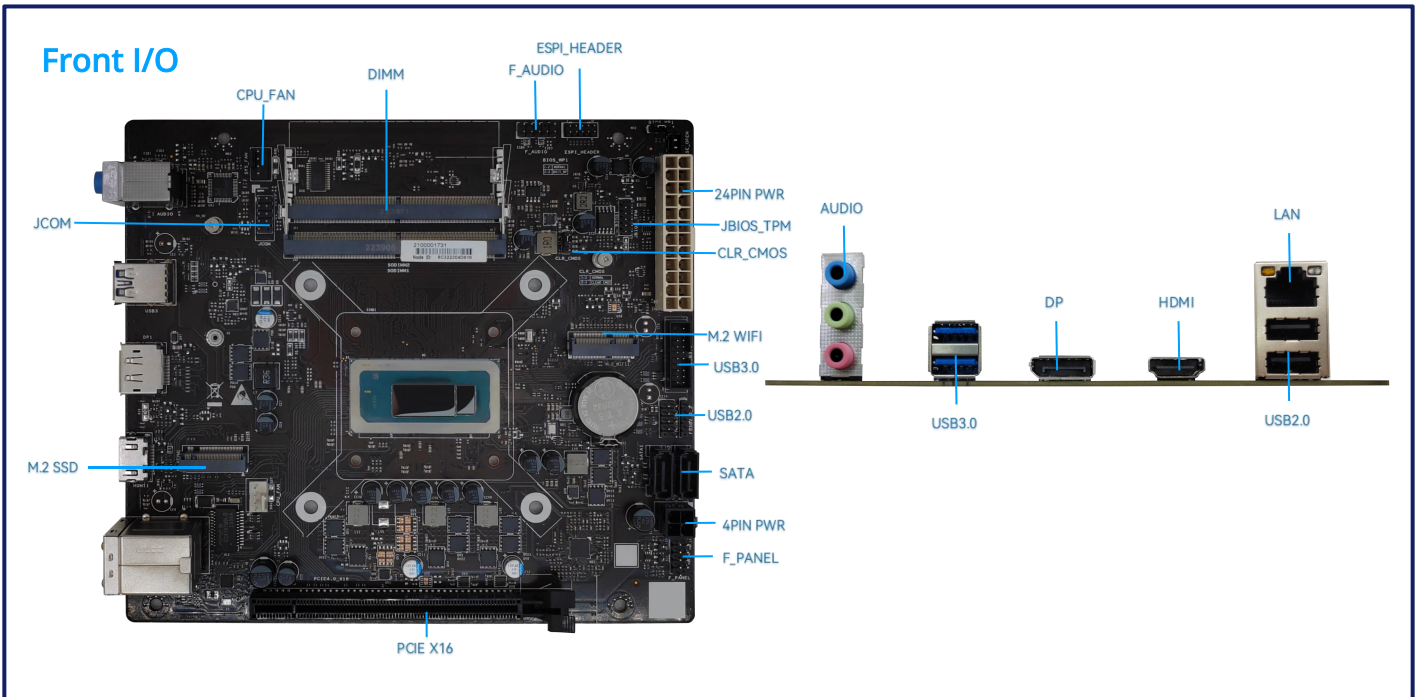


- Intel Alder Lake/Raptor Lake-H/P/U Platform
- ITX: 170 x 190mm
- 2 x SO-DIMM DDR5 (MAX 64G)
- 1 x M.2 2242/2280 SSD, 2 x SATA Gen3 Port
- 9 x USB2.0/3.0
- 1 x M.2 WIFI Key E 2230 (WIFI+BT+CNVI)
- 1 x HDMI, 1 x DP
- Gigabit Ethernet Card, support LAN wake-up
- 4+1PHAS power supply, CPU 45W

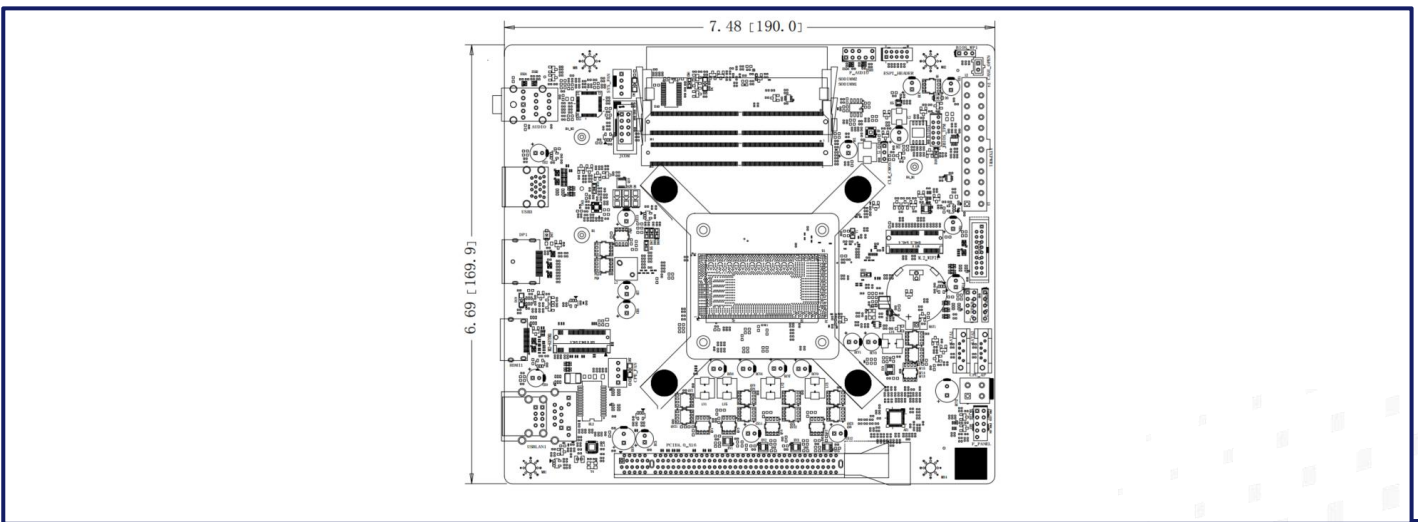
01 Specifications

CPU	Intel Alder Lake/Raptor Lake U/P/H CPU
Chipset	SOC
Graphics Card	PCIe/onboard
RAM	2 x SO-DIMM DDR5 5200 MHz, Max 64G (32GB per DIMM)
OS	WINDOWS 11
BIOS	AMI
Storage	1 x M.2 2242/2280, support PCIE GEN4 X4 2 x SATA Gen3 Port
Audio	HD Audio IC, ALC897
Network	1 x 1000M Ethernet Port 1 x M.2 WIFI/BT Horizontal slot
Display	1 x DP, 1 x HDMI
Audio I/O	1 x Line in, 1 x Line out, 1 x Mic in; 3.5mm Audio Jack 1 x 9pin, 2*5-1 2.54mm
USB	Rear IO: 2 x USB2.0, 2 x USB3.2 Gen1 (5G) Onboard: 3 x USB2.0, 2 x USB3.2 Gen1 (5G)
COM	1 x 9pin, 2*5-1 2.54mm
Expansion Slots	1 x PCI Express4.0 x16 slot (X8 signal)
Front Panel	1, 2*5pin-1 (2.54 Needle)
Other	FAN: 1 x CPU fan 4Pin, 1 x chassis 4Pin 1 x CLR_CMOS 3Pin, 1 x JBIOS_TPM 2*6Pin-1
Power Input	24PIN + 4PIN power port
Dimensions	ITX, 170 x 190 mm
Working Temp.	-5~50°C
Working Humidity	10%~90% non-condensing
Storage Temp.	-20~70°C
Storage Humidity	5%~95% non-condensing

Product view



Dimensions



Product Selection

Model	Configuration
JRPHIX01 V1.0	i5-13420H/DDR5/M.2+2 SATA/M.2 WIFI/1 1000M/5 USB2.0/4 USB3.0
JRPHIX01 V1.0	i5-13500H/DDR5/M.2+2 SATA/M.2 WIFI/1 1000M/5 USB2.0/4 USB3.0
JRPHIX01 V1.0	i7-13620H/DDR5/M.2+2 SATA/M.2 WIFI/1 1000M/5 USB2.0/4 USB3.0