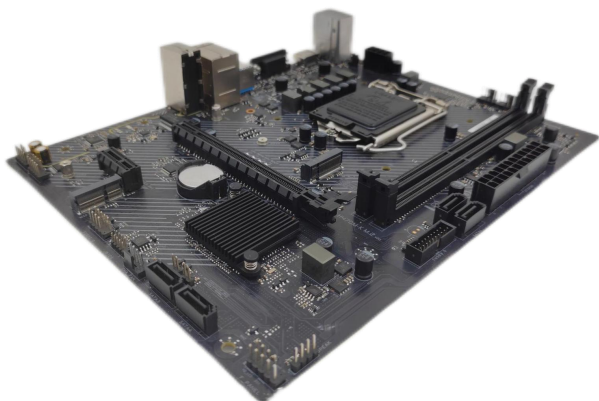


JCMSMC09

Intel Comet Lake-S 2DIMMS Desktop Motherboard

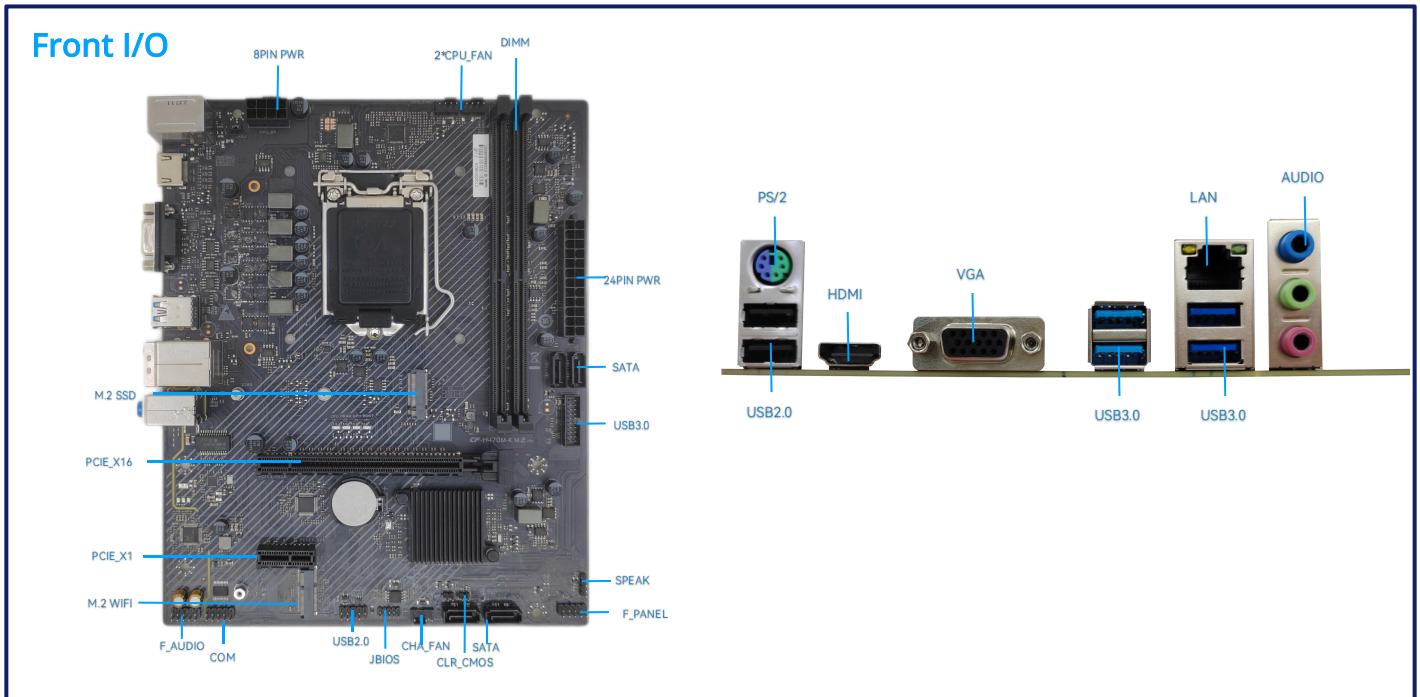


- Intel Comet Lake H470
- M-ATX: 236 x 188mm
- 2 x U-DIMM DDR4 (MAX 64G)
- 1 x M.2 2242/2280 SSD, 4 x SATA Gen3 Port
- 10 x USB2.0/3.0
- M.2 WIFI/BT Slot
- 1 x HDMI, 1 x VGA
- Gigabit Ethernet Card, support LAN wake-up
- 4+1 PHASE power supply, CPU 65W

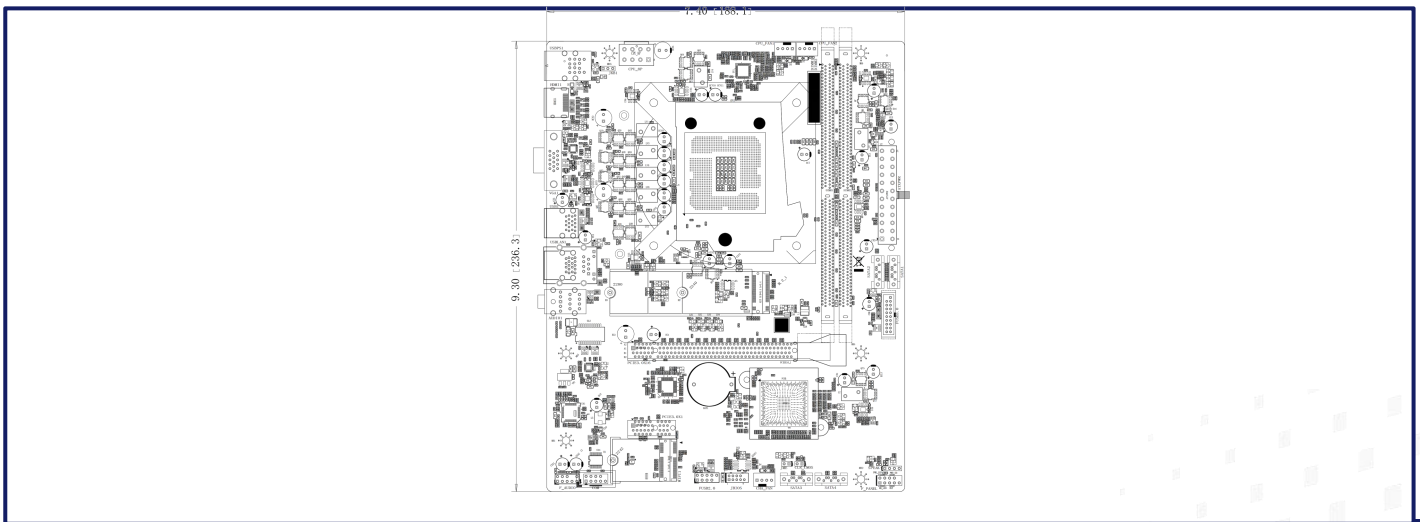
01 Specifications

CPU	Support Intel® 10th Core™ processor, MAX 65W
Chipset	H470
Graphics Card	PCIe/onboard (reserved)
RAM	2 x U-DIMM DDR4, support 3200/2933/2666/2400MHz (MAX 64G)
OS	WINDOWS 11
BIOS	AMI
Storage	1 x M.2: 2242/2280,support PCIE GEN3 x4 4 x SATA Gen3 Port
Audio	HD Audio IC, 6CH
Network	1 x 1000M Ethernet Port 1 x M.2 WIFI/BT Horizontal slot
Display	1 x HDMI, 1 x VGA
Audio I/O	1 x Line out, 1 x Line in, 1 x Mic in; 3.5mm Audio Jack 1 x 9pin, 2*5pin-1 2.54mm
USB	Rear IO: 2 x USB2.0, 4 x USB3.2 Gen1 5G (Type-A) Onboard: 2 x USB2.0, 2 x USB3.2 Gen1 5G (Type-A)
COM	1 x 9pin, 2*5pin-1 2.54mm
Expansion Slots	1 x PCI Express3.0 x16 slot, 1 x PCI Express3.0 x1 slot
Front Panel	1 x 2*5pin-1 (2.54 Needle)
Other	FAN: 2 x CPU fan 4Pin, 1 x chassis fan 4Pin (only Smart FAN) 1* JBIOS 2*6Pin-1, 1 x speaker 4Pin, 1 x CLR_CMOS 3Pin
Power Input	24PIN + 8PIN power port
Dimensions	Micro ATX, 236 x 188 mm
Working Temp.	-5~40 °C
Working Humidity	10%~90% non-condensing
Storage Temp.	-20~70 °C
Storage Humidity	5%~95% non-condeensing

02 Product view



03 Dimensions



04 Product Selection

Model	Configuration
JCMSMC09 V1.0	H470 (65W) /1 1000M/WIFI/6 USB3.0 (5G) /4 USB2.0/HDMI+VGA